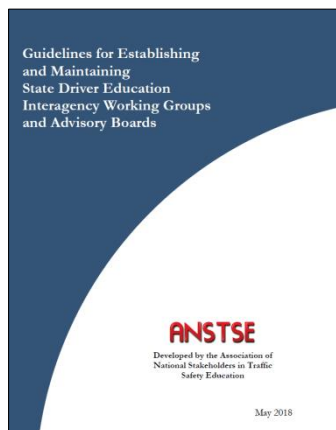


Guidelines for Establishing and Maintaining State Driver Education Interagency Working Groups and Advisory Boards, May 2018



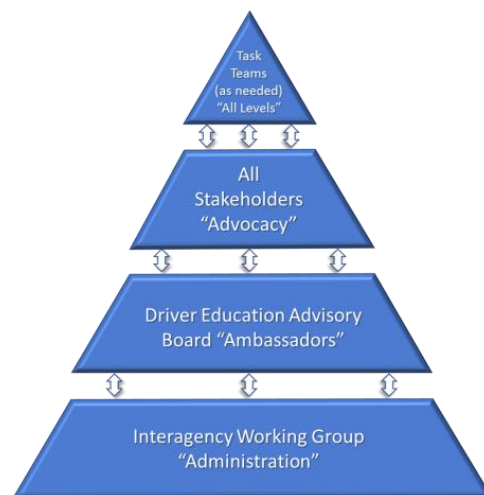
The Association of National Stakeholders in Traffic Safety Education (ANSTSE) has released a document *Guidelines for Establishing and Maintaining State Driver Education Interagency Working Groups and Advisory Boards* to assist state administrators with their understanding of appointing an advisory board and the steps necessary to establish quality novice teen driver education programs.

Creating and establishing an advisory board and an interagency working group have been the most common recommendation in both the NHTSA State Driver Education Assessments and ANSTSE State Technical Assistance efforts. Many states continue to have questions concerning the establishment of a driver education advisory board and interagency working group.

The *Novice Teen Driver Education and Training Administrative Standards (NTDETAS)* specifies to establish and maintain an advisory board of stakeholders to provide input to the state agency/agencies. Establishing an advisory board and interagency working groups brings all stakeholders in the state together to work on the common goal of improving novice teen driver safety and to share information.

The structure of a driver education advisory board consists of:

- 1. State Interagency Working Group:** Responsible for the overall Administration of the State's driver education program.
- 2. Driver Education Advisory Board:** Established and maintained by the state interagency working group and consists of core stakeholders or Ambassadors and is focused on the programmatic nature of State driver education related issues.
- 3. All Stakeholders:** Are current Advocacy organizations and groups that provide critical guidance for the State's driver education program, for example, parent teacher associations (PTA).
- 4. Task Teams or Subgroups:** May be utilized at all levels to work on specific tasks or deliverables.



The guideline document also provides examples of state driver education advisory boards and resources to assist in developing an advisory board. Click [here](#) for the complete document.

